

Task Force on Climate-Related Financial Disclosures (TCFD)

2020 Alignment

CEMEX is a supporter of TCFD and has adopted its recommendations for climate-related disclosures since our 2019 reporting cycle.

The table to the right shows the alignment of our 2020 reporting with TCFD.

The CEMEX 2020 Integrated Report is available at:

www.cemex.com/IntegratedReport2020

Further details and additional information can be found across our annual submissions to CDP at:

<https://www.cdp.net/en>



Governance

Disclose the organization's governance around climate-related risks and opportunities

Recommended Disclosures

a) **Board's oversight of climate-related risks and opportunities.**

CDP: C1.1, C1.1a, C1.1b
Integrated Report: P.81

b) **Management's role.**

CDP: C1.2, C1.2a, C1.3, C1.3a, C2.2, C2.2a
Integrated Report: P.81, 89



Strategy

Disclose the actual and potential impacts on climate-related risks and opportunities on the organization's businesses, strategy, and financial planning where such information is material

Recommended Disclosures

a) **Risks and opportunities for short, medium and long term.**

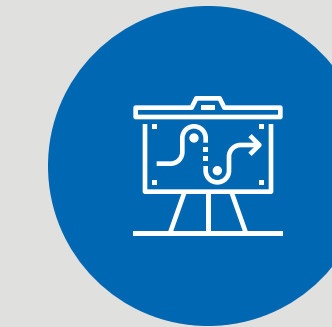
CDP: C2.1, C2.1a, C2.2, C2.2a
Integrated Report: P. 87-92

b) **Impact on business strategy and financial planning.**

CDP: C2.1b, C2.2, C2.2a, C2.3, C2.3a, C2.4, C2.4a, C3.1, C3.1a, C3.1b, C3.1d, C3.1e, C3.1f, C4.3c, C4.5, C4.5a, C-CE9.6, C-CE9.6a, C12.3a, C12.3f
Integrated Report: P.8-9, 12, 16, 21, 24, 30-38, 46-51, 54

c) **Resilient strategy and scenarios planning.**

CDP: CC2.2a, C2.3a, C2.4a, C3.1a, C3.1b, C11.3a
Integrated Report: P. 30-38, 46-51, 54, 89



Risk Management

Disclose how the organization identifies, assesses, and manages climate-related risks

Recommended Disclosures

a) **Climate-related risks identification.**

CDP: C1.1a, C1.1b, C1.2, C1.2a, C2.1, C2.1a, C2.1b, C2.2, C2.2a, C2.3, C2.3a
Integrated Report: P. 12, 30-38, 46-51, 54, 81, 87-92

b) **Climate-related risks management.**

CDP: C1.1a, C1.1b, C1.2, C1.2a, C2.1, C2.2, C2.3, C2.3a, C3.1, C3.1b, C3.1d, C3.1e, C3.1f, C-CE9.6, C-CE9.6a, C11.1d, C12.1a, C12.1b, C12.3, C12.3a, C12.3c, C12.3e, C12.3f
Integrated Report: P. 12, 16, 30-38, 46-51, 54, 81, 87-92

c) **Integration into overall risks.**

CDP: C1.1a, C1.1b, C1.2, C1.2a, C2.1, C2.1a, C2.1b, C2.2, C2.2a, C2.3, C2.3a
Integrated Report: P. 12, 16, 30-38, 46-51, 54, 81, 87-92



Metrics and Targets

Disclose the metrics and targets used to assess and manage relevant climate-related risks and opportunities where such information is material

Recommended Disclosures

a) **Climate-related metrics.**

CDP: C4.1, C4.1b, C4.2, C4.2a, C4.2b, C4.5a, C9.1, C11.3, C11.3a
Integrated Report: P. 4, 16, 18, 21, 30-38, 46, 54-57, 182-184

b) **Disclose Scope 1, 2 and 3.**

CDP: C6, C7, C8
Integrated Report: P. 16, 18, 21, 31-32, 183

c) **Climate-related targets.**

CDP: C1.3, C1.3a, C4.1, C4.1b, C4.2, C4.2a, C4.2b
Integrated Report: P. 4, 9, 18, 21, 30-38, 46, 54-57, 183